



# Pre-Proposal Conference

February 15, 2024

## **Welcome & Table-Setting** - 10 minutes

- Introduction to Owáamniyomni (Shelley Buck, President)
- Restoring Dakota Presence (Barry Hand, Program Director)

## **RFP** - 10 minutes (Kjersti Duval, Contract Manager)

- Site Characteristics (3 minutes)
- Process Considerations (3 minutes)
- Teaming Considerations (3 minutes)
- Selection Process (1 minute)

## **Open Question Time** - 40 minutes



# Welcome!



**Shelley Buck, President**  
Owámniyomni Okhódayapi



**Barry Hand, Program Director**  
Owámniyomni Okhódayapi



**Kjersti Duval, Contract Manager**  
Studio Civic | Duval



**Owámniyomni & Wita Wanaǵi**

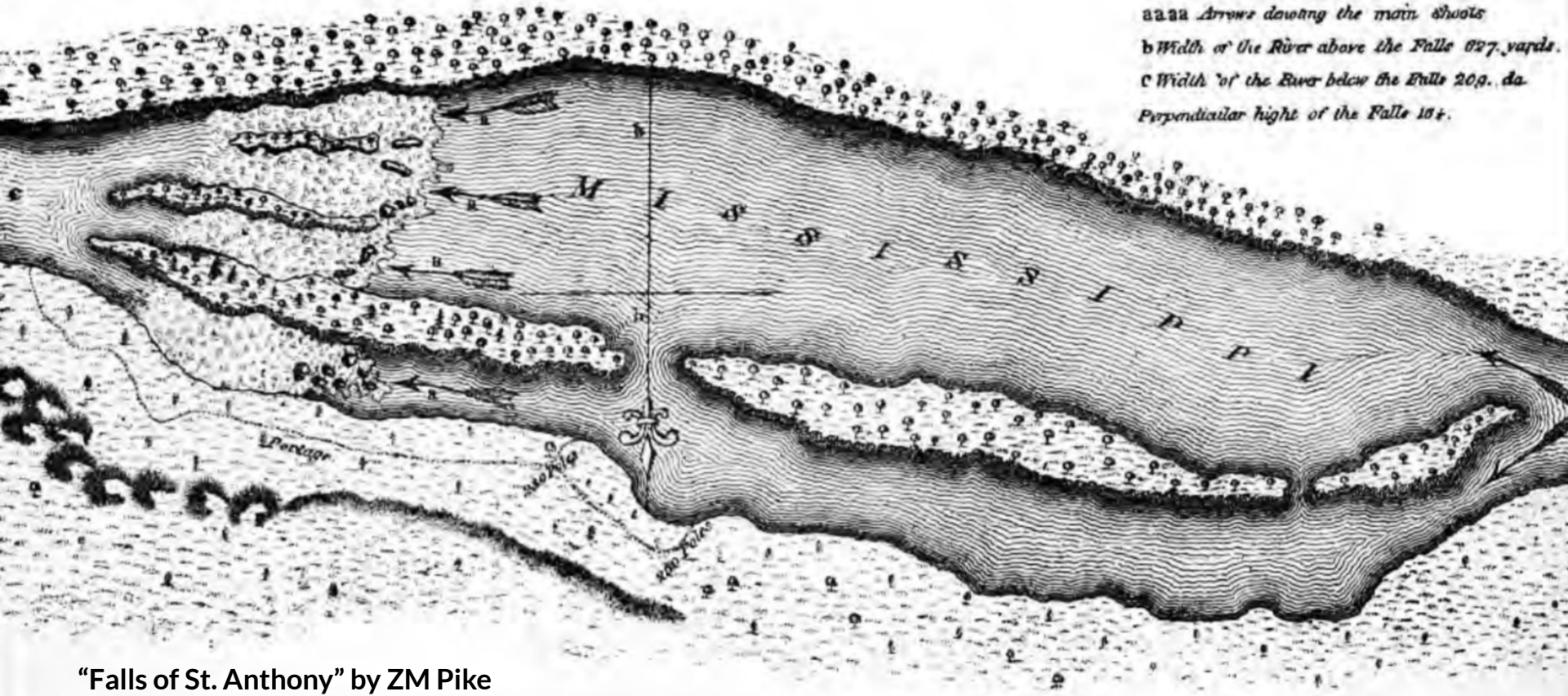
**The Falls of St. Anthony  
Seth Eastman, 1848**



# FALLS of S<sup>T</sup> ANTHONY

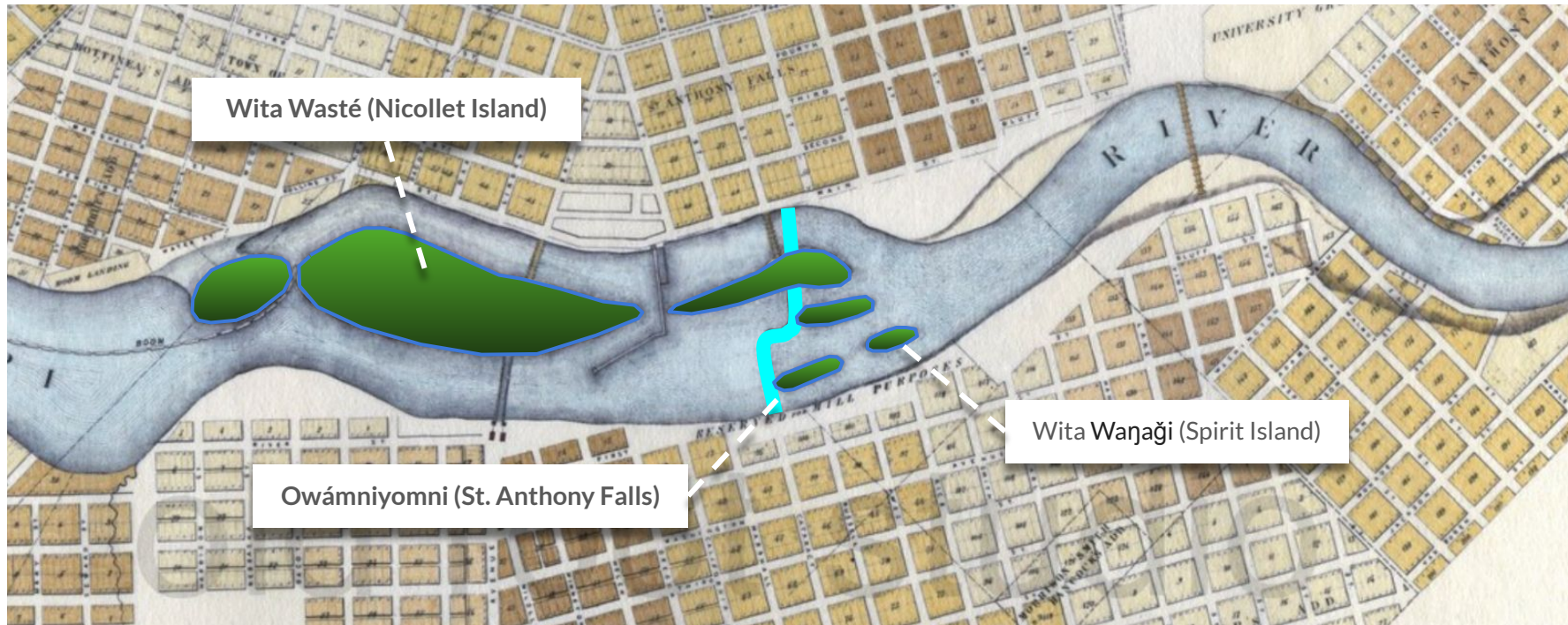
## REFERENCES

Full of the Water in length of the Forage 58. Ac.  
aaaa Arrows denoting the main shoots  
b Width of the River above the Falls 627. yards  
c Width of the River below the Falls 209. da.  
Perpendicular height of the Falls 184.



"Falls of St. Anthony" by ZM Pike  
Headwaters of the Mississippi, 1895

## Owámniyomni, Wita Wasté, & Wita Waŋaŋi



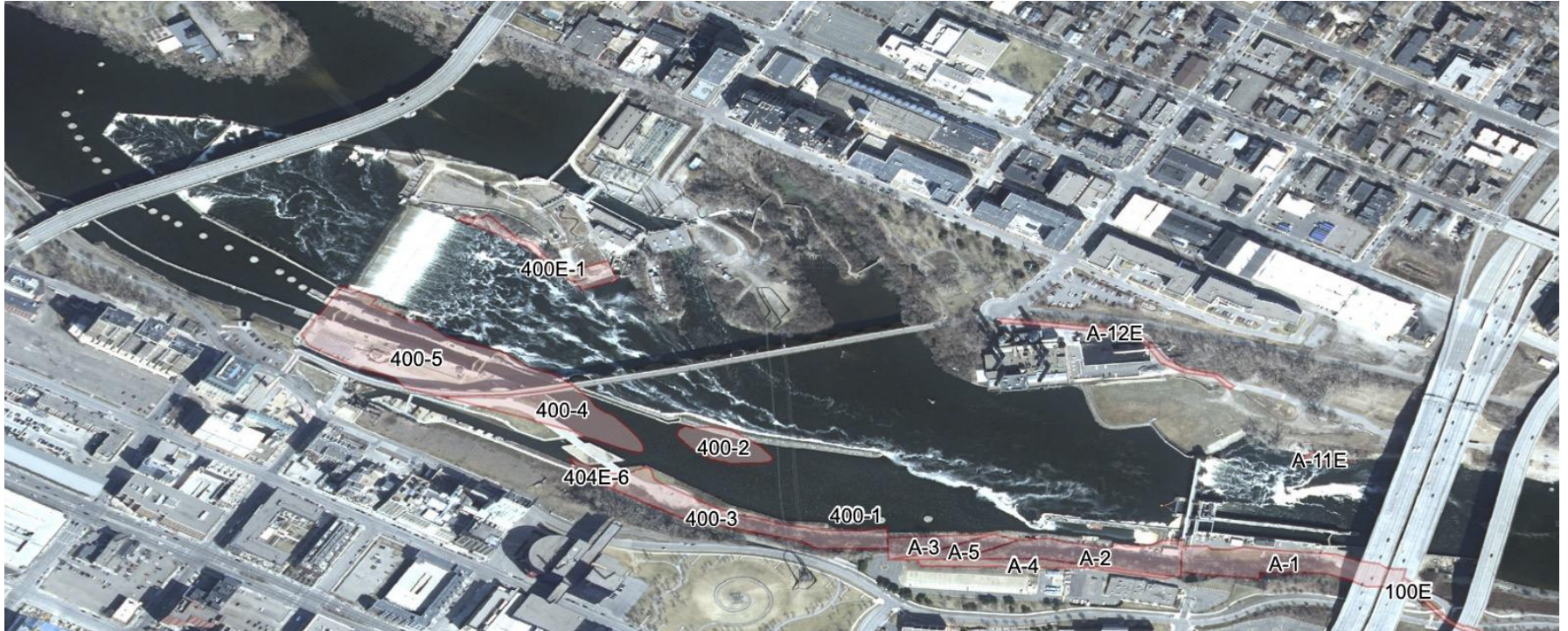


# Owámniyomni, Wita Wasté, & Wita Wanaǵi



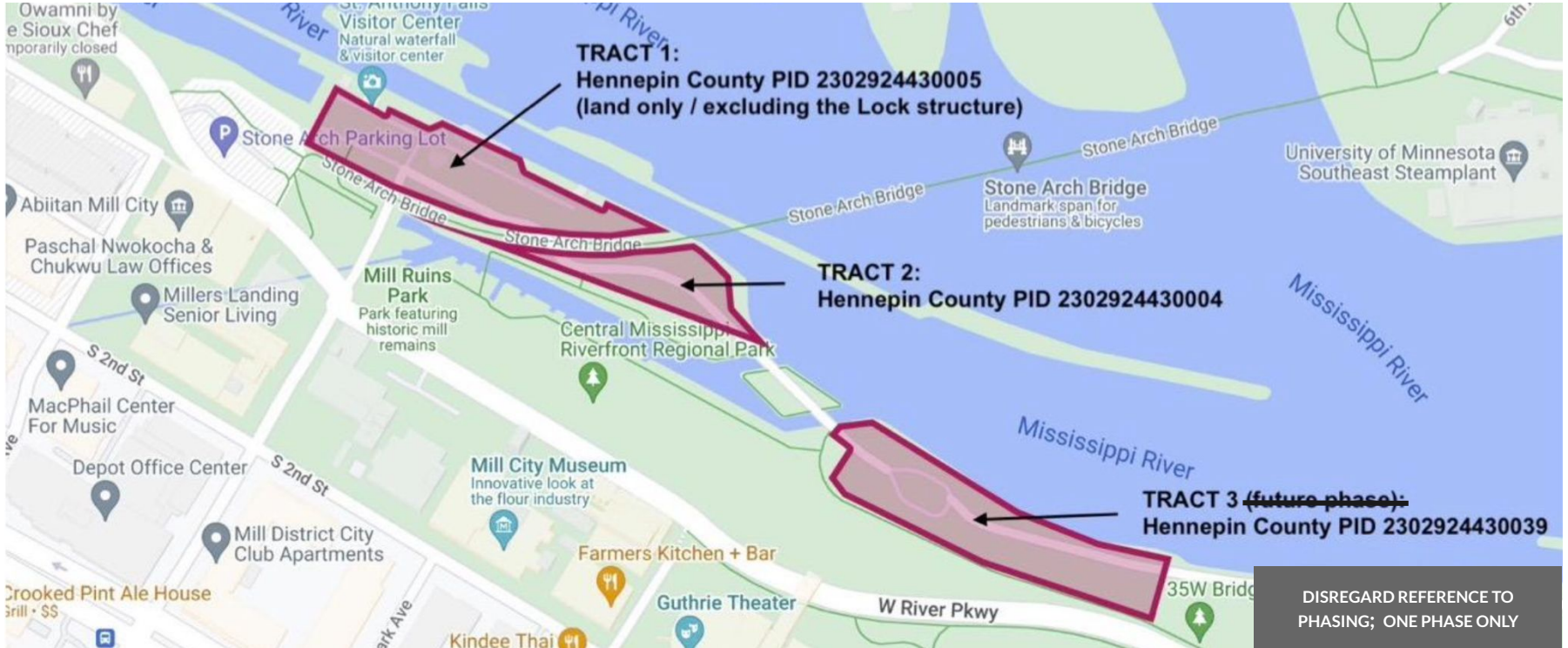


# U.S. Army Corps Land Acquisitions





# U.S. Army Corps Land Conveyance (Project Site)







# Current Site Characteristics

// Site Tour in Google Maps //



# Process Considerations

Things to know as you shape your approach.



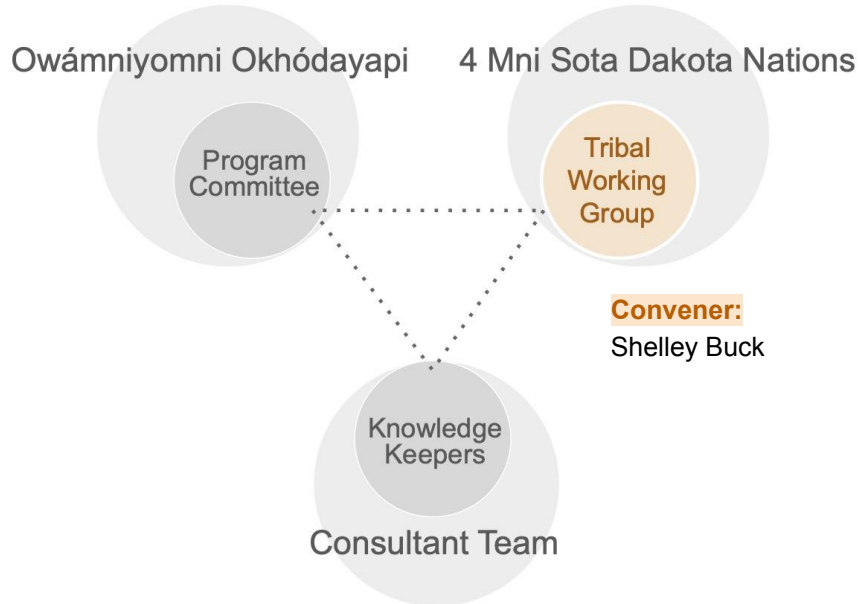
## Consensus Decision-Making



Owámniyomni Okhódayapi's primary mission is to **restore Dakota presence and indigenous landscape at Owámniyomni.**

Therefore, Owámniyomni Okhódayapi has designed a **three-way network of Dakota-led communication and concept development** to center the process on Dakota knowledge and consensus decision-making.

## Tribal Working Group Role



The Tribal Working Group seats representatives of the four sovereign Mni Sota Dakota Nations, and is facilitated by Shelley Buck (OO's President and a former Tribal elected leader). OO has made a commitment to be guided by the Nations in this work. Tribal Working Group members will **inform each phase of work from a Tribal perspective.** Future representation by exiled Dakota Tribes is possible.



## Programming & Partnership Advisory Group Role



The Programming & Partnership Advisory Group is a roundtable of Dakota leaders facilitated by Barry Hand (OO's Program Director), with deep expertise in Mni Sota Dakota program development and management. They will provide **informed, culturally specific, and vibrant programming concepts and criteria** to the process.

# Mni Sota Dakota Knowledge Keepers Role



Knowledge keepers will be embedded with each Consultant Team, ensuring that the guidance that is provided by both the Programming & Partnership Advisory Group and the Tribal Working Group is fully understood and deepened through design. Mni Sota Dakota Knowledge Keepers will bring **authenticity, trust, and relationships** to the process.





## Engagement

Owámniyomni Okhódayapi has already completed a multi-year community engagement process resulting in the First Season Report ([link to report provided in Exhibit E of the RFP](#)).

The current need is not for a second large engagement process, but rather more targeted outreach to deepen relationships, inform design development, keep the public apprised, and communicate progress.



## High Level Goals for Each Phase

**Task 1, Discovery.** In this phase, the Consultant Team will:

- Get to know the physical site and its characteristics (Upper Lock, Central Riverfront, Owámniyomni and Wita Waṇaḡi)
- Learn the values and goals at the center of the project, including Dakota lifeways, history, and indigenous ways of thinking
- Identify all agency imposed compliance requirements (including but not limited to USACE, State of MN, MPRB, City of Minneapolis)



## High Level Goals for Each Phase (cont'd)

**Task 2, 35% Design.** In this phase, the Consultant Team will:

- Create the big site organization moves to (1) restore and change the narrative of the site through transformative design and (2) satisfy compliance needs. Initial programming & design guidance will be provided by the Programming & Partnership Advisory Committee and the Tribal Working Group.
- Provide a 35% design cost estimate.
- Submit all drawings & reports to the level of completion required for 35% design review.

## High Level Goals for Each Phase (cont'd)

**Task 3, 65% Design.** In this phase, the Consultant Team will:

- Advance the design to a more detailed level through engagement and activities with all stakeholders. Go deep on how programs and activities will be supported by design (e.g. indigenous landscape restoration, food and medicine systems, language, water).
- Provide a 65% design cost estimate.
- Submit all drawings & reports to the level of completion required for 65% design review.





## High Level Goals for Each Phase (cont'd)

**Task 4, 95% Design.** In this phase, the Consultant Team will:

- Advance the design to construction and bid readiness.
- Provide a 95% design cost estimate.
- Submit all drawings & reports to the level of completion required for 95% design review.



# Teaming Considerations

Things to know as you shape your team.

# Considerations for Preparing Team Quals & Fees

## Typical Subconsultant

1. Headshot
2. Individual Bio
3. Scope & Fee Proposal
4. Firm or Organizational Bio
5. Selected Project Experience
6. Selected Project Images

## Knowledge Keeper

1. Headshot
2. Individual Bio
3. Scope & Fee Proposal
4. About Your Organization, or if individual, Your Tribal Affiliation(s)
5. Selected Experience as a Mni Sota Dakota Knowledge Keeper
6. Selected Images of Relevant Experience or Projects

## Considerations for Preparing Team Quals & Fees

1. Knowledge Keepers have been advised to consider **two alternative approaches to the consultant role**:
  - a. Work as an **individual consultant**, or
  - b. Work as a **collective**, and prepare a shared scope and fee proposal
2. Knowledge Keepers have been advised that they may consider **two alternative approaches to costs beyond billable hours**:
  - a. Invoice for **reimbursable expenses** in the standard way, or
  - b. Propose a **budget allowance** to be managed by the Knowledge Keeper, with costs paid directly by the Prime to supplemental vendors





# Selection Process

Our selection committee.



## Selection Committee

The Selection Committee will include:

- Representatives of the 4 Dakota Nations
- OO President
- OO Chair, Board of Directors and co-Chair, Fundraising Committee
- 2 OO Board Members, including a representative of the Programming & Partnership Committee
- Planning Director, Minneapolis Park & Recreation Board

The Committee will convene with the Contract Manager to formally adopt specific selection criteria in advance of receiving submissions. Selection criteria will be consistent with the values and needs expressed in the RFP and shared by OO leadership in this meeting.



## Questions?

Pre-proposal questions can be directed to the RFP Contract Manager  
through February 19th:

**[kjersti@duvalcompanies.com](mailto:kjersti@duvalcompanies.com)**

All questions will be circulated with Owámmniyomni Leadership, and answered promptly. The final Q&A will be posted on February 21.



## Thank You!



Shelley Buck, President  
Owámniyomni Okhódayapi



Barry Hand, Program Director  
Owámniyomni Okhódayapi



Kjersti Duval, Contract Manager  
Studio Civic | Duval